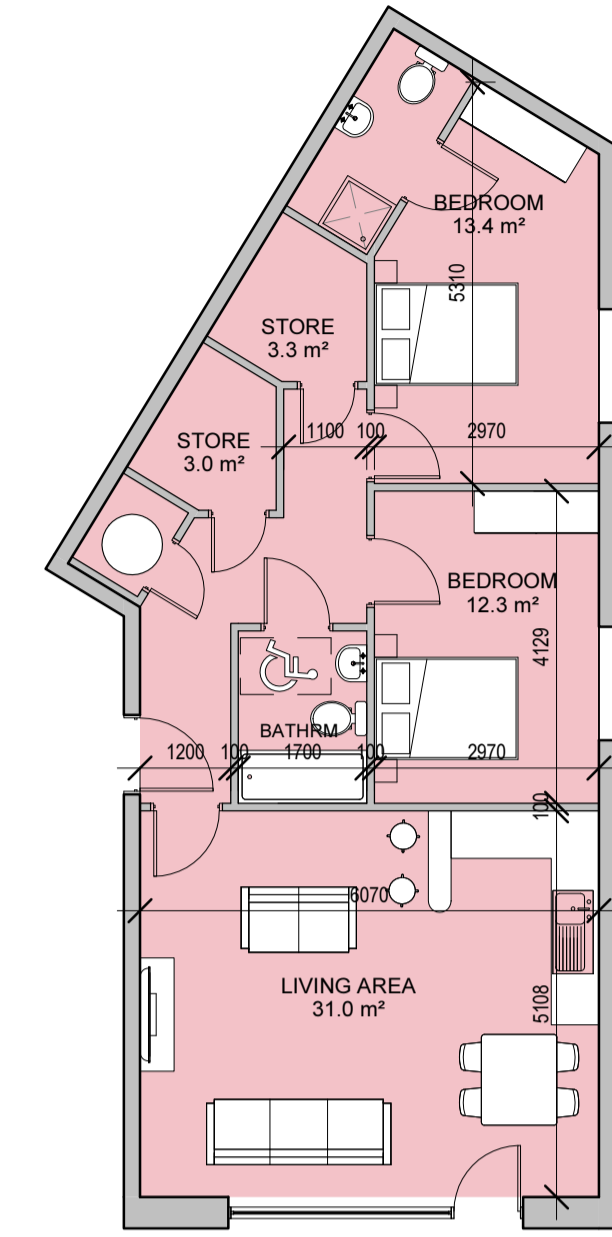


LIVING AREA: 30.0m<sup>2</sup>  
 BEDROOM AREA: 25.7m<sup>2</sup>  
 STORAGE AREA: 6m<sup>2</sup>  
 TYPE Y7 2 BED APARTMENT  
 AREA: 80.1m<sup>2</sup>

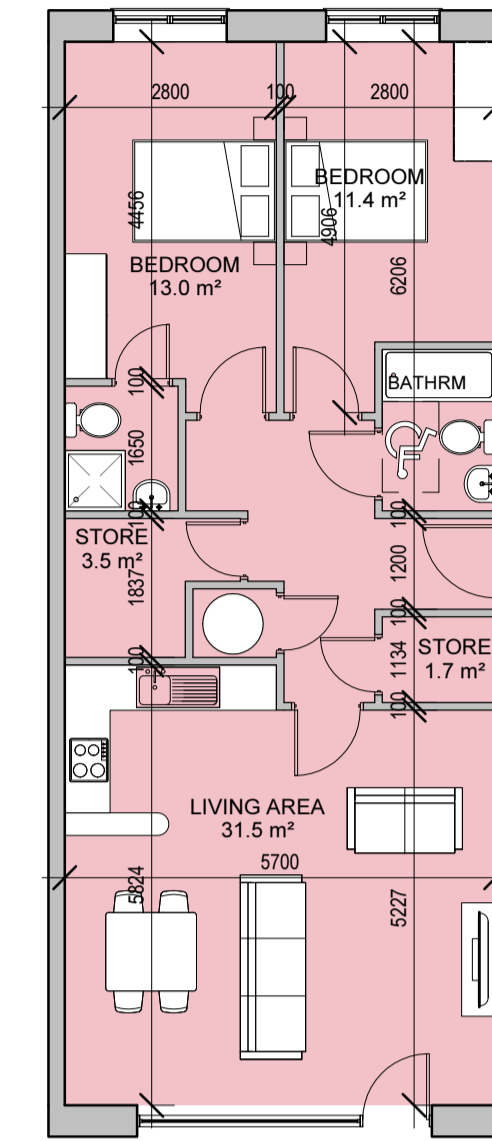


LIVING AREA: 40.2m<sup>2</sup>  
 BEDROOM AREA: 29.8m<sup>2</sup>  
 STORAGE AREA: 6m<sup>2</sup>  
 TYPE Y13 2 BED APARTMENT  
 AREA: 91.2m<sup>2</sup>

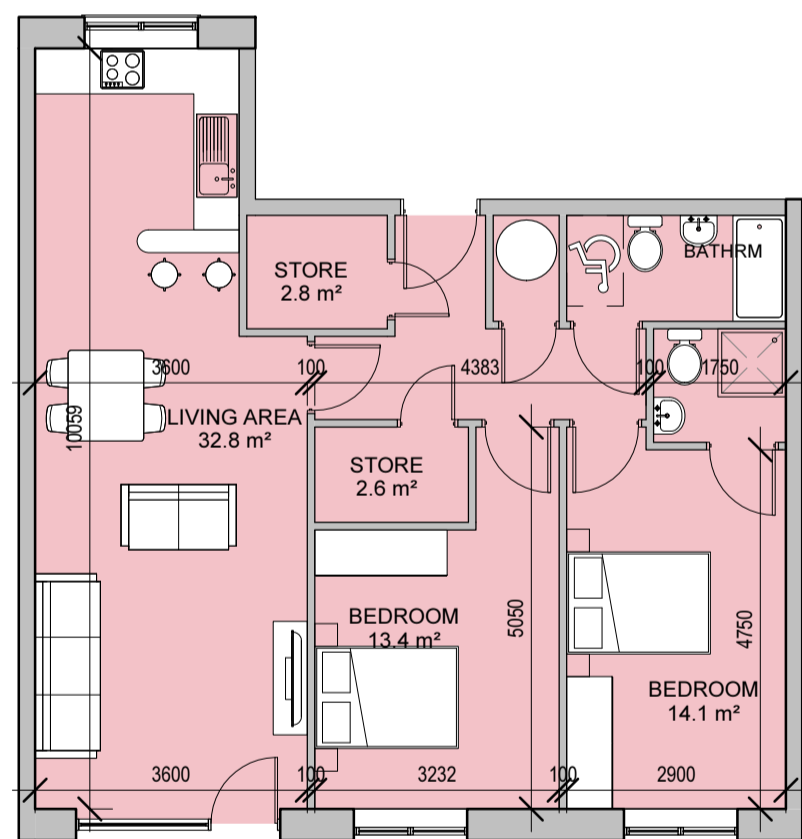
LIVING AREA: 41.3m<sup>2</sup>  
 BEDROOM AREA: 24.4m<sup>2</sup>  
 STORAGE AREA: 6m<sup>2</sup>  
 TYPE Y14 2 BED APARTMENT  
 AREA: 91.1m<sup>2</sup>



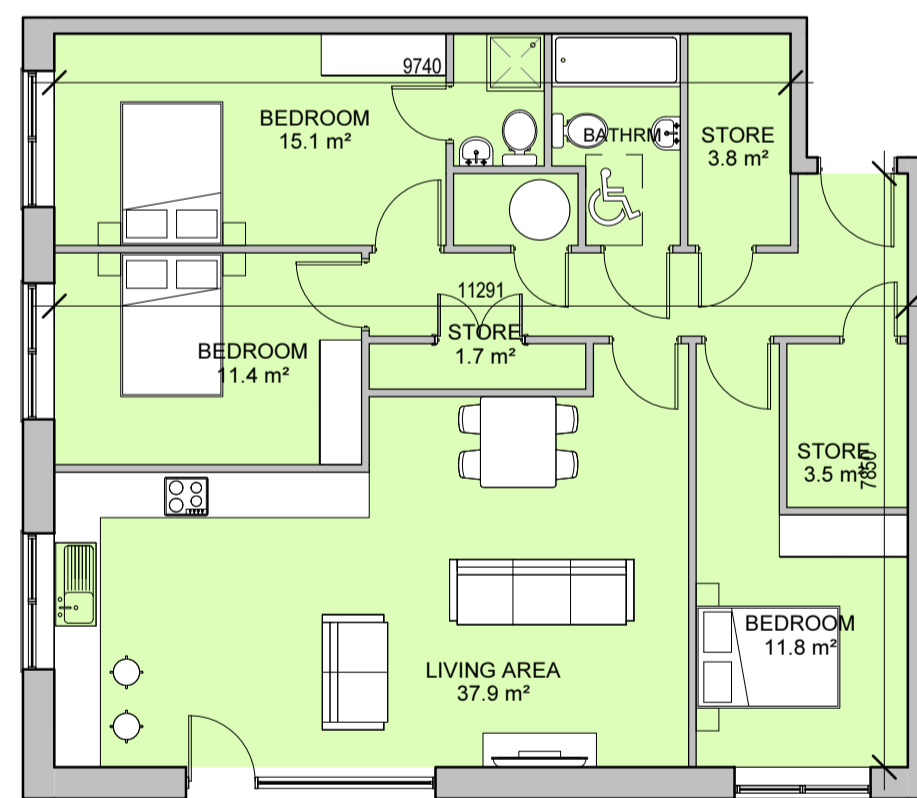
LIVING AREA: 31.0m<sup>2</sup>  
 BEDROOM AREA: 25.7m<sup>2</sup>  
 STORAGE AREA: 6.3m<sup>2</sup>  
 TYPE Y10 2 BED APARTMENT  
 AREA: 83.8m<sup>2</sup>



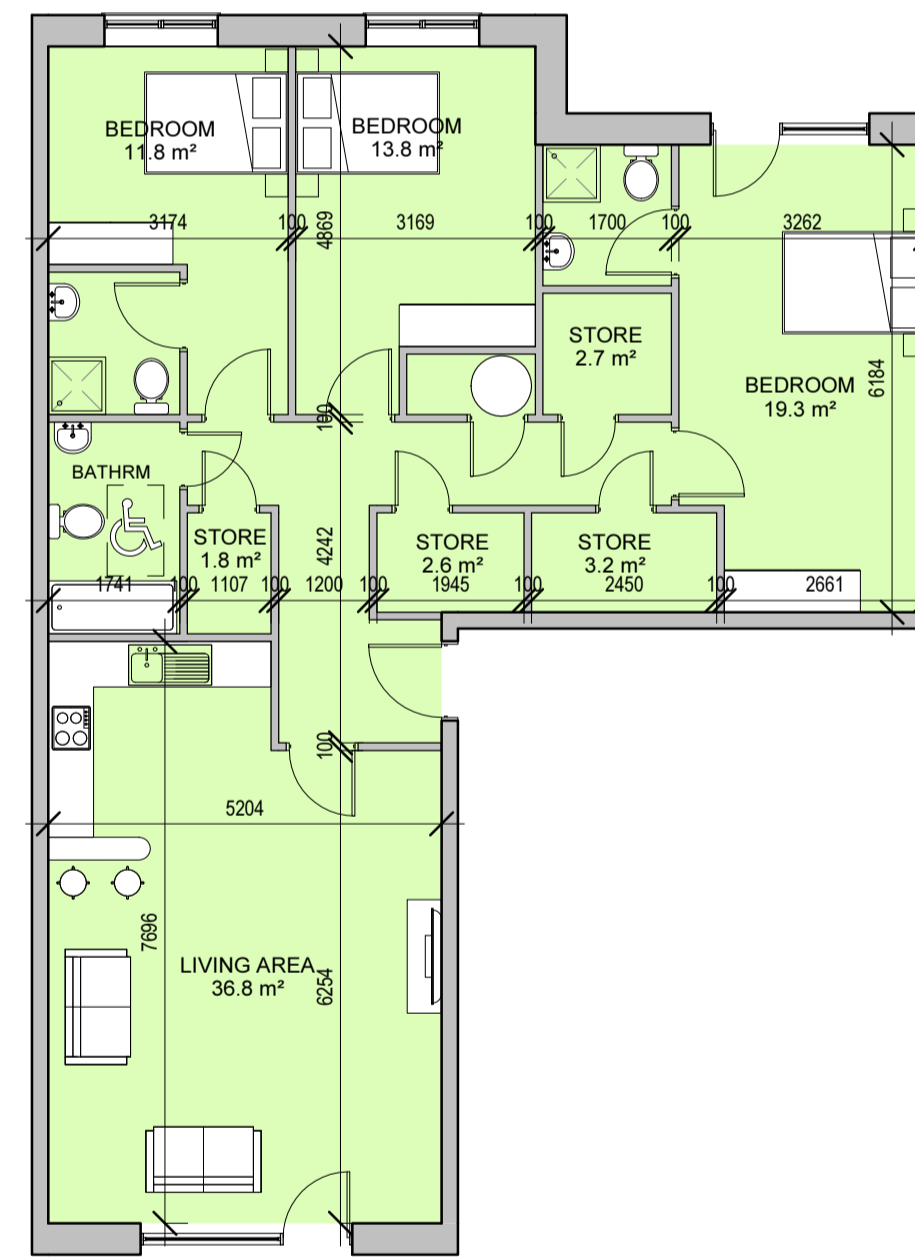
LIVING AREA: 31.5m<sup>2</sup>  
 BEDROOM AREA: 24.4m<sup>2</sup>  
 STORAGE AREA: 6m<sup>2</sup>  
 TYPE Y11 2 BED APARTMENT  
 AREA: 80.2m<sup>2</sup>



LIVING AREA: 32.8m<sup>2</sup>  
 BEDROOM AREA: 27.5m<sup>2</sup>  
 STORAGE AREA: 6m<sup>2</sup>  
 TYPE Y12 2 BED APARTMENT  
 AREA: 83.9m<sup>2</sup>



LIVING AREA: 34.3m<sup>2</sup>  
 BEDROOM AREA: 38.3m<sup>2</sup>  
 STORAGE AREA: 9m<sup>2</sup>  
 TYPE Z1 3 BED APARTMENT  
 AREA: 103m<sup>2</sup>



LIVING AREA: 36.8m<sup>2</sup>  
 BEDROOM AREA: 44.9m<sup>2</sup>  
 STORAGE AREA: 10.1m<sup>2</sup>  
 TYPE Z2 3 BED APARTMENT  
 AREA: 122.2m<sup>2</sup>

LEGEND

- 2 BED APARTMENT
- 3 BED APARTMENT

**BLOCK 14B**

**PLANNING**

Rev.	Initial	Date	Revision Description
A	RJ	2019 08 16	ISSUED FOR PLANNING

		SCALE @ A1: 1:100	PAPER SIZE
		SCALE @ A3:	A1
CLIENT	GERARD GANNON PROPERTIES	DRAWN BY: RJ	2018 NO:
PROJECT	BLOCK 14, CLONGRIFFIN, DUBLIN 13	CHECKED BY: ZE	073-021
DWG. TITLE	BLOCK 14B UNIT TYPES	DATE: AUG 2019	DRWG NO:
		REVISION: A	PL-119